



Technical Data Sheet

Mansfield 8011 / Phoenix 8612 Ash Door Latch Upgrade

Kit: 90-73116

Publication Date: 12/12/2005

Materials Required:

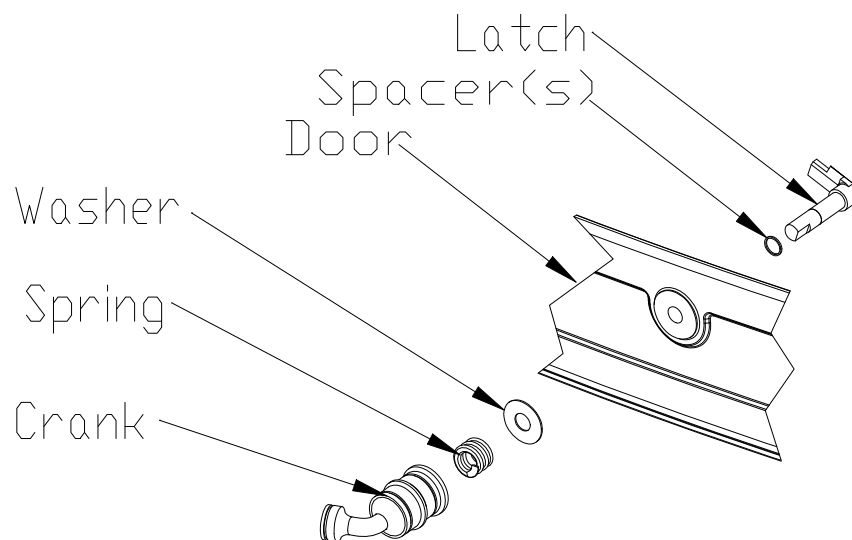
Latch (5010-056)
Crank (5010-081)
Spring (5240-138)
Washer (5021-032)
Setscrew (4500-2976)
Spacer (4700-0790), 4 each

Tools Required:

5/32" Allen wrench

PROCEDURE:

1. Remove the old ash door latch assembly by loosening the two setscrews. Retain the bolt and wood handle to be installed on the new crank.
2. Install the new latch assembly as shown below. Start out with one spacer on the inside of the door. The crank now threads onto the latch. Adjust the crank so there is approximately 1/8" between the crank and the washer.
3. Align the setscrew hole in the crank with the flat on the latch shaft. Insert and tighten the setscrew.
4. Install the bolt and wood handle removed in step one.
5. Check ash door seals using the "dollar bill test." Shut the ash door on a dollar bill. If the bill pulls out without any resistance, then your stove's ash door isn't sealed properly. Spacers can be added or removed to adjust gasket pressure. If necessary, replace the gasket.



©HearthStone Quality Home Heating Products, Inc.

www.hearthstonestoves.com
inquiry@hearthstonestoves.com